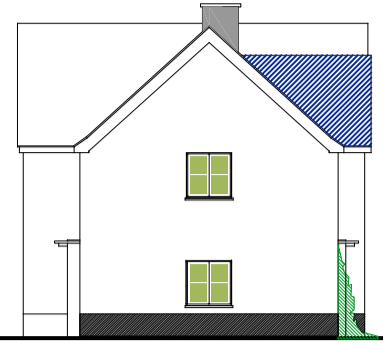
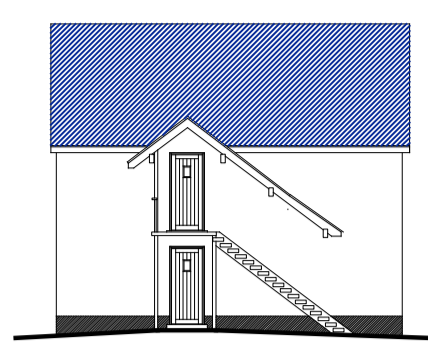




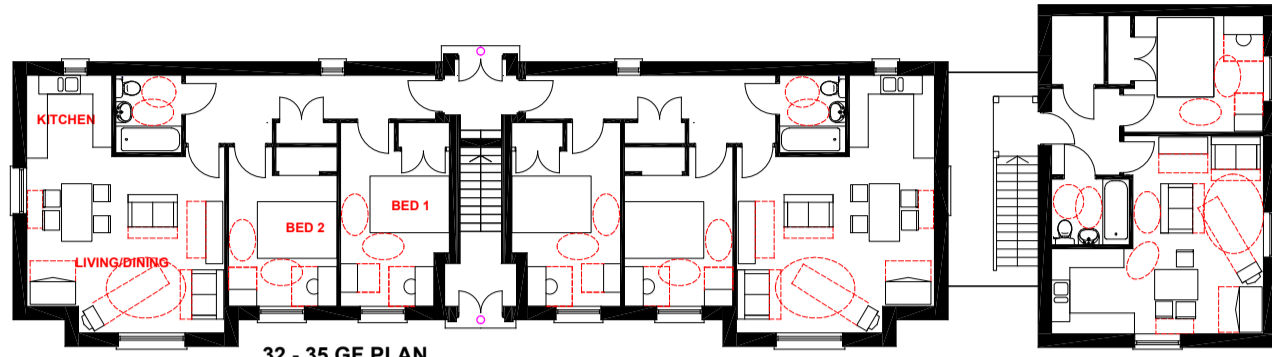
32 - 37 FRONT (south) ELEVATION



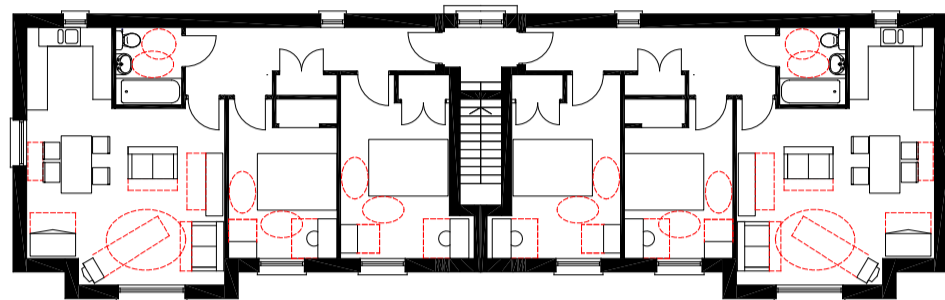
32 - 37 FRONT (south) ELEVATION



32 - 37 FRONT (south) ELEVATION & SECTION

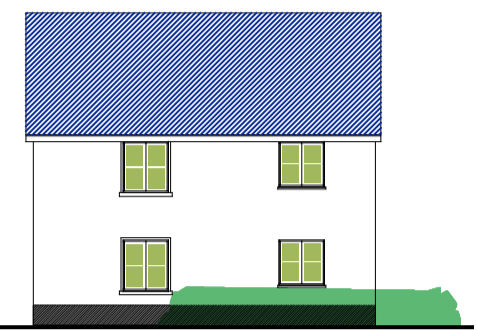


32 - 35 GF PLAN

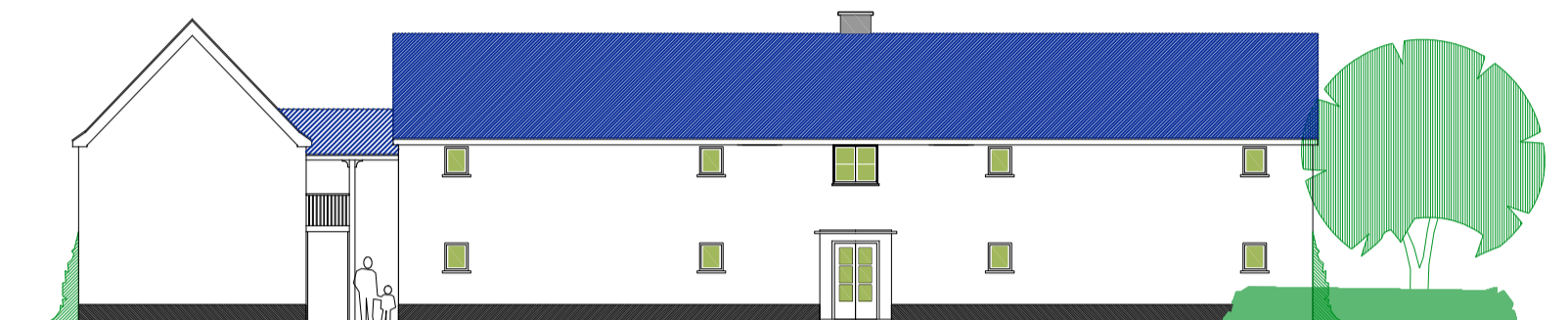


32 - 35 1st F PLAN

N.B. COLOURS ARE INDICATIVE ONLY: FOR DETAILS OF MATERIALS & COLOURS, REFER TO THE MATERIALS SCHEDULE



36 - 37 SIDE (east) ELEVATION



32 - 35

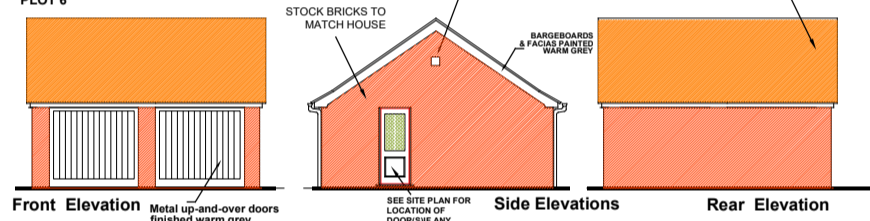
FLATS  
BLACK RAINWATER GOODS  
DOORS TO BE FINISHED DARK GREEN

GARAGES

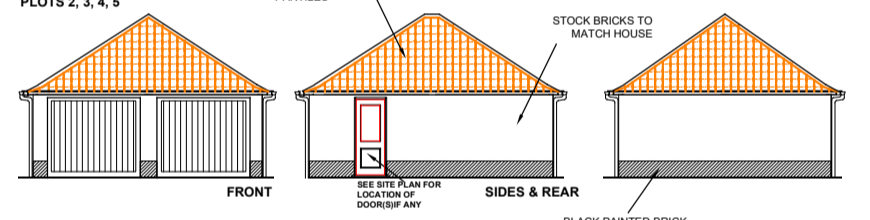
BLACK RAINWATER GOODS  
DOORS TO BE FINISHED DARK GREEN

DOUBLE GARAGES

DOUBLE GARAGE PLOT 6

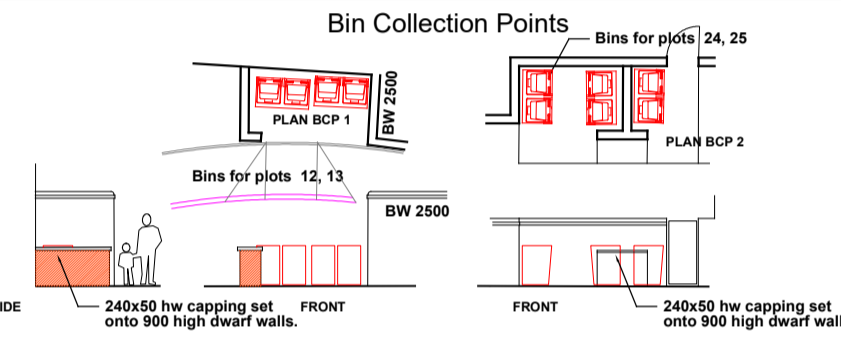
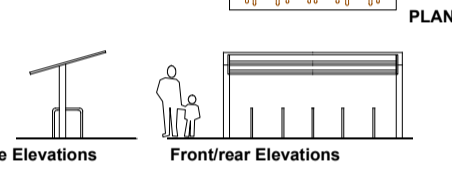


DOUBLE GARAGES PLOTS 2, 3, 4, 5



CYCLE STORE

RHS frame & box profile steel sheet roof, all powder-coated dark grey



Bin Collection Points

Bins for plots 24, 25

PLAN BCP 1

PLAN BCP 2

Bins for plots 12, 13

PLAN BCP 1

PLAN BCP 2

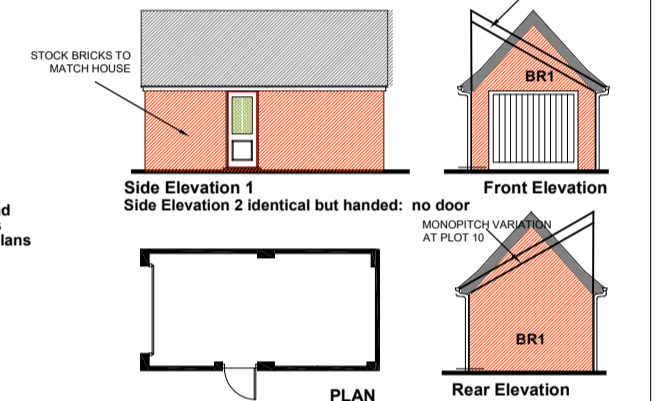
Bins for plots 14, 15, 19, 20

PLAN BCP 1

PLAN BCP 2

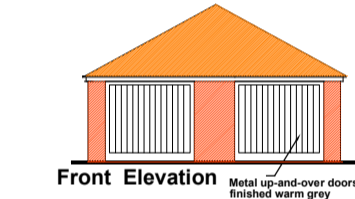
SINGLE GARAGE

Thus: PLOTS 1, 7, 8, 10 Handed: PLOTS 2, 21, 28



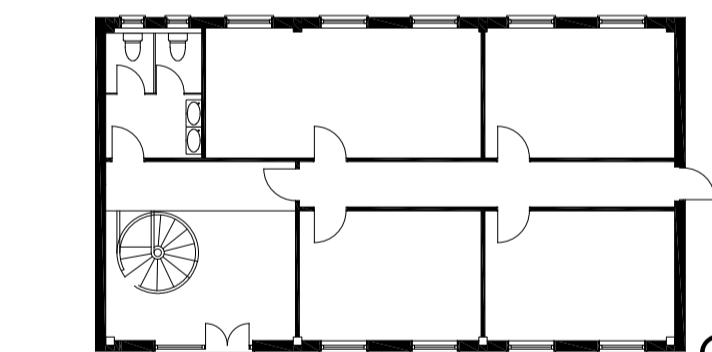
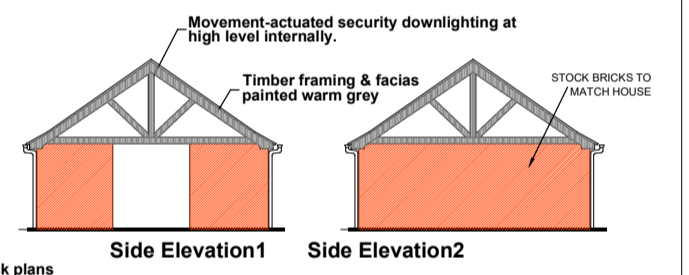
PAIRED GARAGES

PLOTS 14, 15, 19, 20



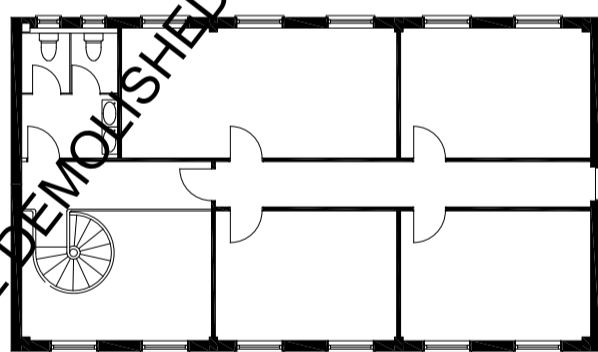
TRIPLE CARPORTS

PLOTS 16/17/18,

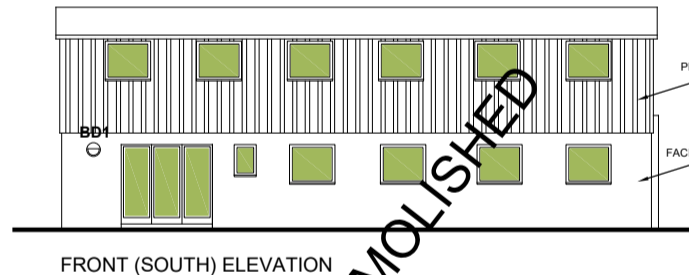


EXISTING B1 OFFICES

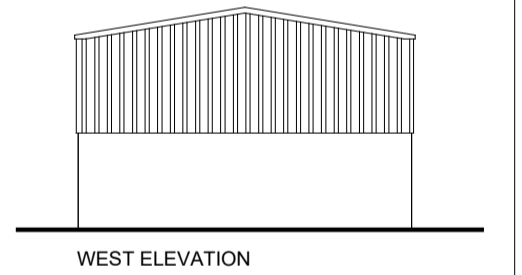
GROUND FLOOR PLAN



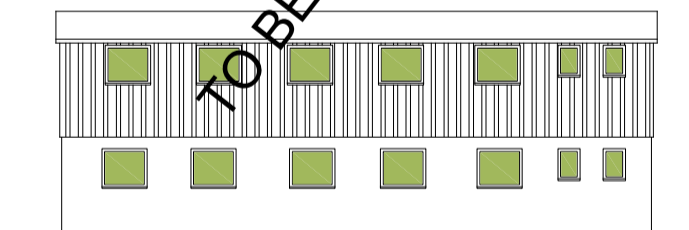
FIRST FLOOR PLAN



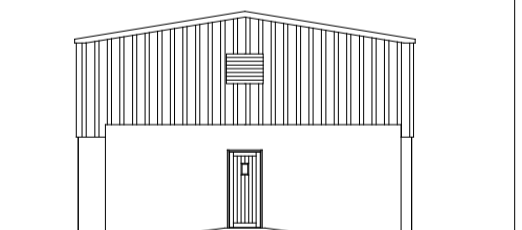
FRONT (SOUTH) ELEVATION



WEST ELEVATION



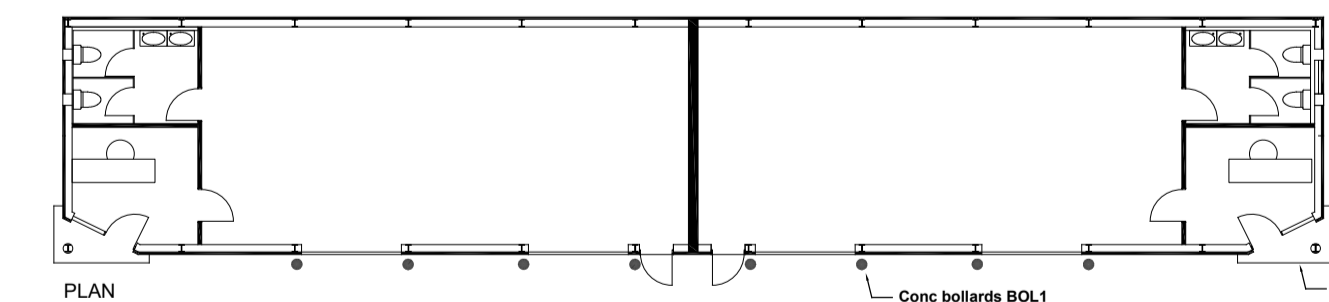
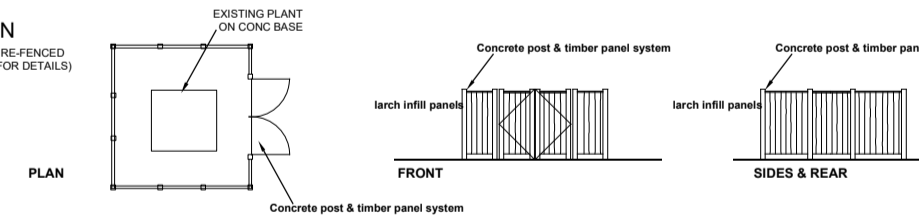
REAR (NORTH) ELEVATION



EAST ELEVATION

SUBSTATION

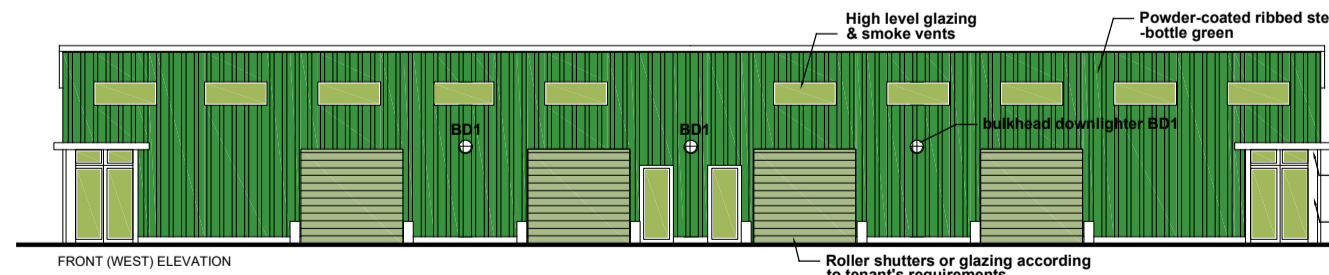
TO BE RETAINED AND REFERENCED AS CB1800 (SEE PA 2 FOR DETAILS)



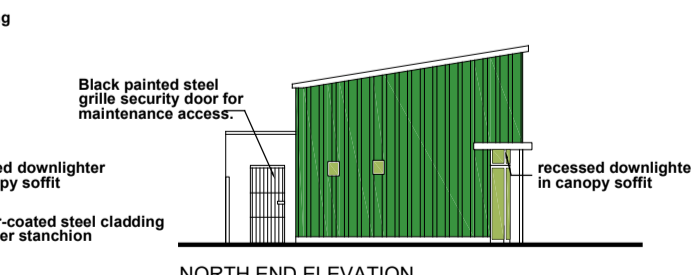
PLAN



EAST (REAR) ELEVATION

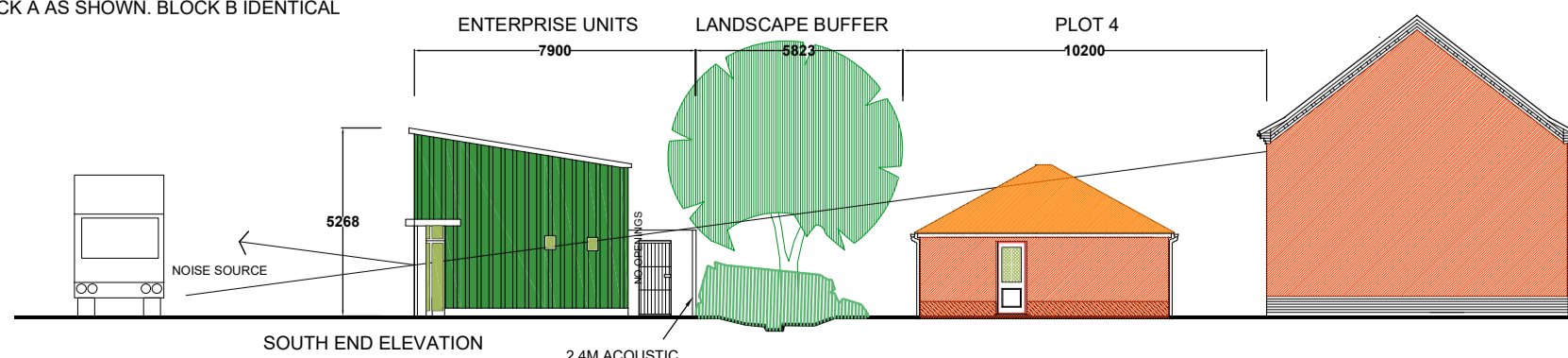


FRONT (WEST) ELEVATION



NORTH END ELEVATION

B1/B8 ENTERPRISE UNITS (2no)  
BLOCK A AS SHOWN. BLOCK B IDENTICAL



SOUTH END ELEVATION

1:200 @ A2  
0 5M

PA 4/B 26 OCT 2017  
PLOTS RENUMBERED 114-  
2 WINDOWS ADDED TO BLOCK 32-35  
BIN COLLECTION POINTS REPLANNED.  
EXISTING B1 OFFICES TO BE DEMOLISHED  
EXISTING SUBSTATION RETAINED.

**MRA**  
Martin Raper Architect  
Tel & Fax 01284-766621

**NORFOLK LAND DEVELOPMENT Ltd**  
Trafalgar House  
Dereham Norfolk  
NR19 1JG

project **Church Road, Griston**

Title **PLANS & ELEVATIONS 1**

No **1704 PA4 /B**