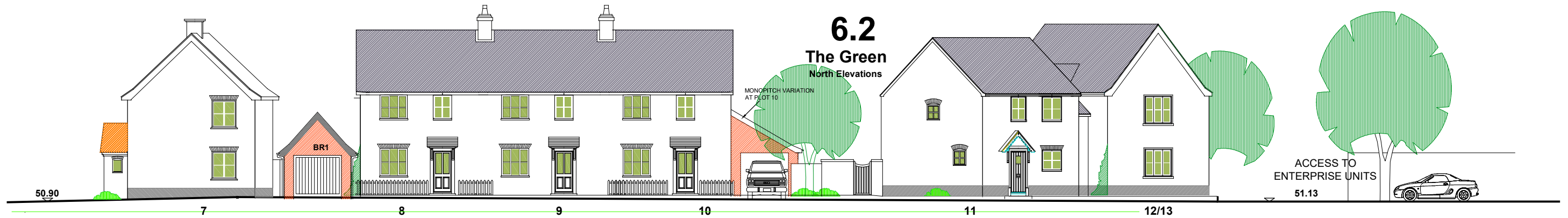


22 21 20 19 18 17 16 15 POST & PIPE FENCE 14

The Green
West Elevations
6.1
50.90



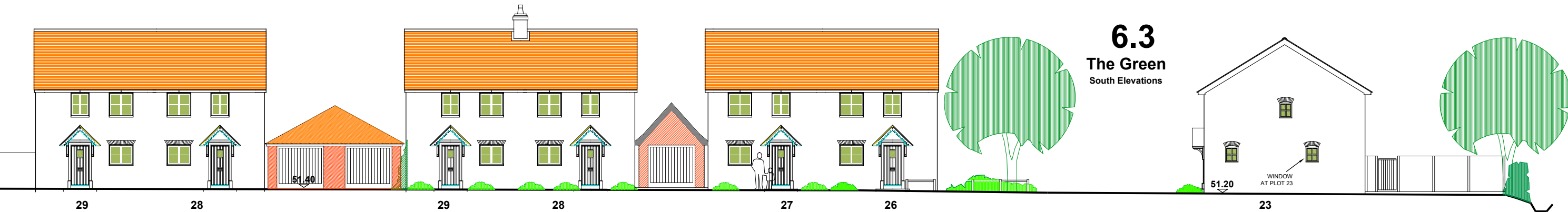
50.90 7 8 9 10 11 12/13

6.2
The Green
North Elevations

ACCESS TO
ENTERPRISE UNITS
51.13

MONOPITCH VARIATION
AT PLOT 10

BR1



29 28 29 28 27 26 23

6.3
The Green
South Elevations

51.20

WINDOW
AT PLOT 23

FOR CONTINUATION
SEE 6.4 BELOW



32 - 37

6.4
The Green
South Elevations

FOR CONTINUATION
SEE 6.3 ABOVE

1:200 @ A3
0 5M

PA 6/B 26 OCT 2017
PLOTS RENUMBERED 11+
PLOTS 7-13, 27-31 REPLANNED.
EXISTING B1 OFFICES TO BE DEMOLISHED

<p>MR·A Martin Raper Architect Tel & Fax 01284-766621</p>	
<p>NORFOLK LAND DEVELOPMENT Ltd Trafalgar House Dereham Norfolk NR19 1JG</p>	
Project	Church Road, Griston
Title	Elevations to the Green
No	1704 PA6 /B