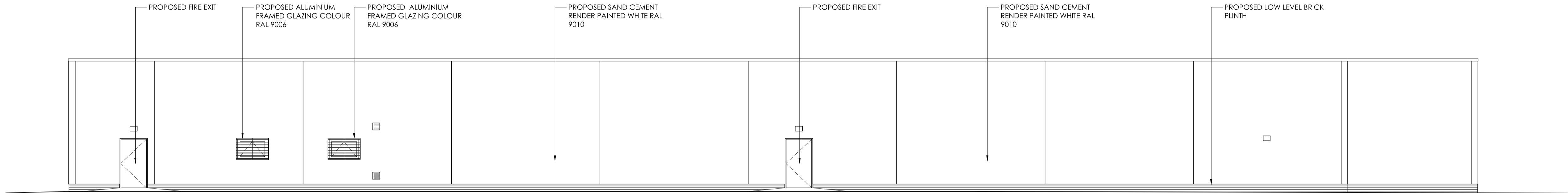


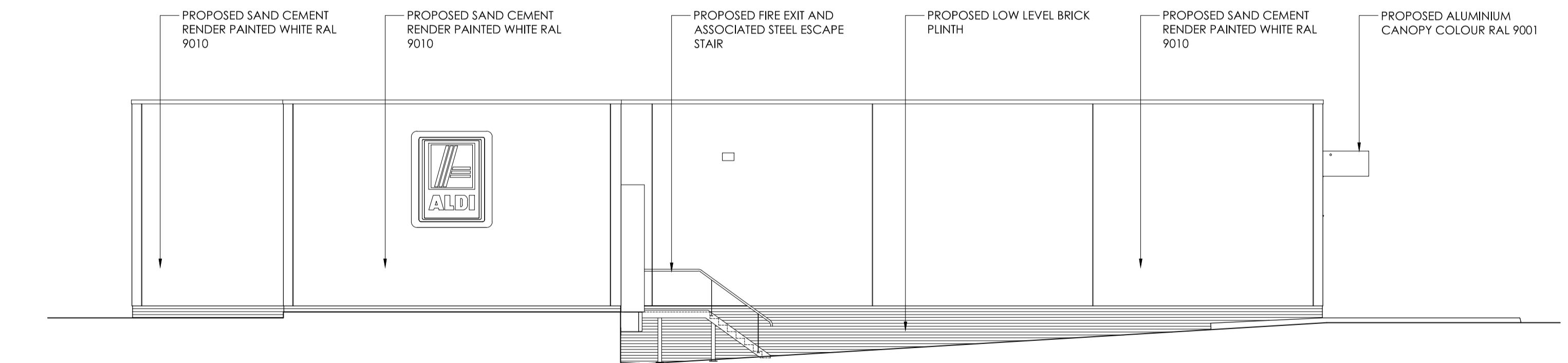
NORTH ELEVATION 1:100



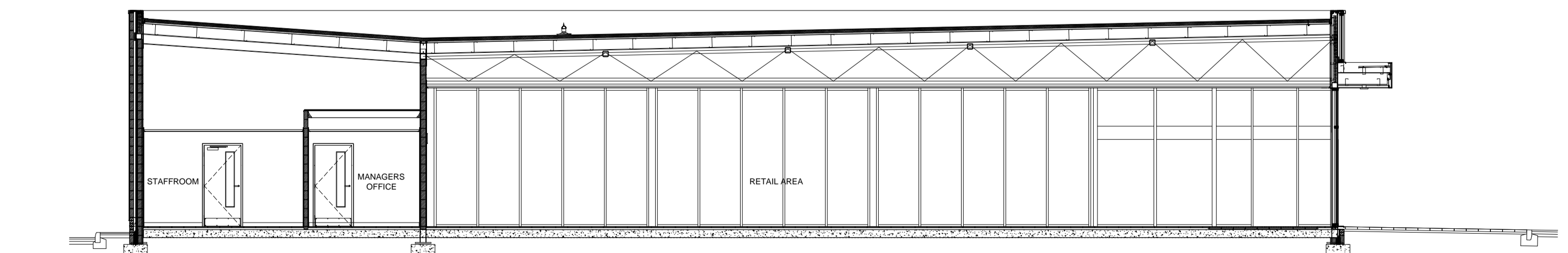
SOUTH ELEVATION 1:100



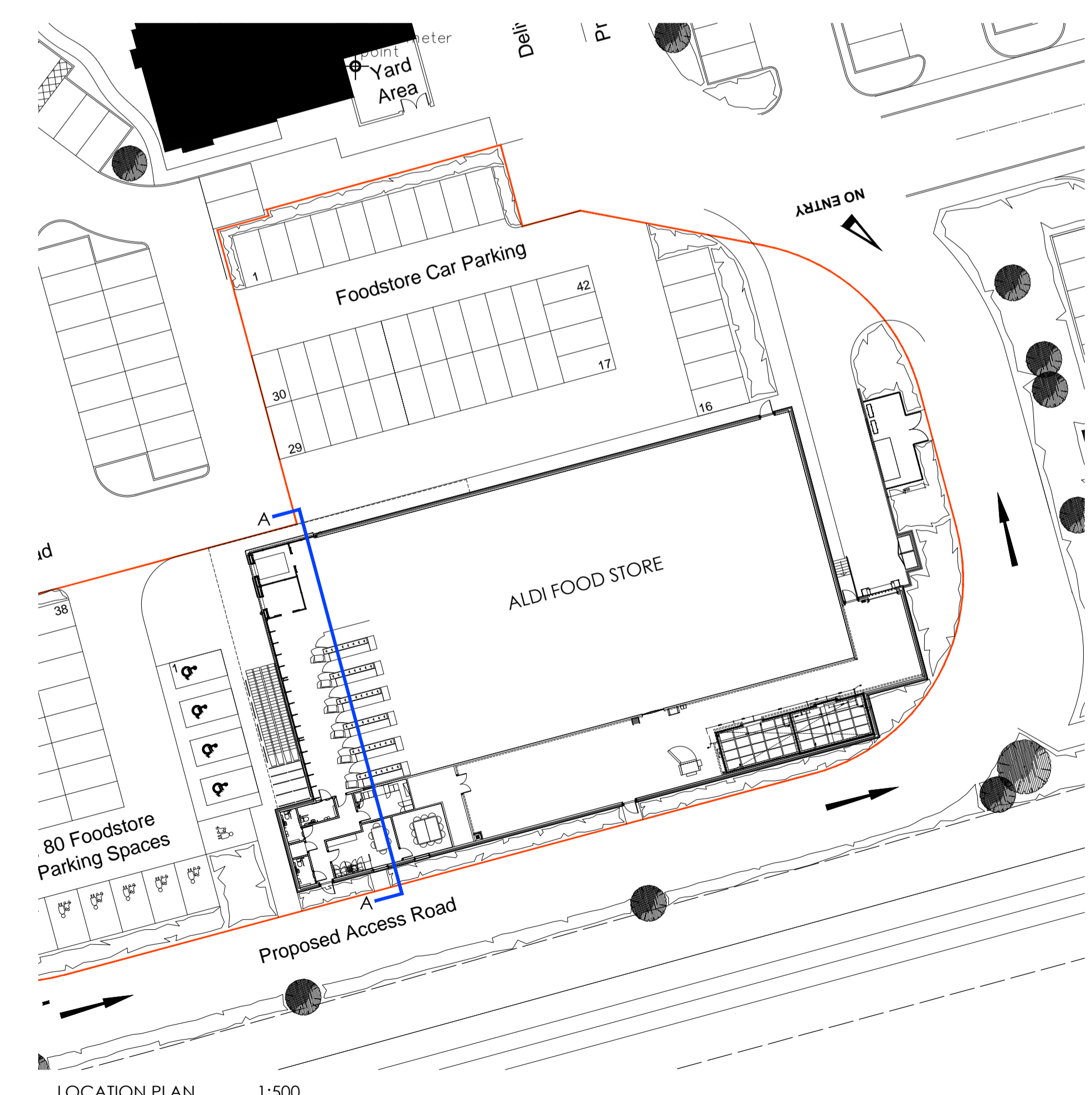
WEST ELEVATION 1:100



EAST ELEVATION 1:100



SECTION A-A 1:100



LOCATION PLAN 1:500

Revisions	
Project Title	PROPOSED DEVELOPMENT CEMEX SITE YAXHAM ROAD DEREHAM NORFOLK
Client	
Status	PLANNING
Scale	1:100 Drawing Size A1
Drawn By	MW Checked By GH Date 02.05.14
Drawing Title	PROPOSED ELEVATIONS & SECTION
Job/Dwg No.	0927-102 Rev -
<ul style="list-style-type: none"> ■ THE HARRIS PARTNERSHIP MILTON KEYNES The Old Rectory, 79 High Street Newport Pagnell, MK16 9AB t. 01908 211 517 f. 01908 211 722 □ THE HARRIS PARTNERSHIP WAKEFIELD 2 St. Johns North, Wakefield, WF1 3GA t. 01924 291 800 f. 01924 290 072 □ THE HARRIS PARTNERSHIP MANCHESTER Carver's Warehouse, 77 Dale Street, Manchester M1 2HG t. 0161 238 8555 f. 0161 244 5809 □ THE HARRIS PARTNERSHIP READING 101 London Road, Reading, RG1 5BY t. 0118 950 7700 f. 0118 956 8642 	